



Bunkhouses



Bathhouses

Conestoga

LOG CABINS & HOMES

BUILDING MEMORIES
ONE LOG AT A TIME



Experience the
Conestoga
Difference



Photos of Camp
Chawanakee Project

BSA National Approved Buildings

Since 1983, Conestoga Log Cabins has partnered with camps all over the country. We offer a wide range of products from cabins to bunkhouses and bathhouses to lodges, recreation halls and custom buildings to fit every need.

Conestoga has the ability to work with the Boy Scout organization as a whole or each individual club to support the growth and life skills the Boy Scouts offer to our Nation’s youth.

Construction Services

- Direct interaction with assembly teams, builders and project managers
- On-site project coordination
- Customer focused
- Budget savvy

Design and Engineering Services

- Custom Buildings
- Simple to Build
- Cost Effective
- Budget Sensitive

Conestoga has worked with the Boy Scouts on the following BSA projects:

Ten Mile River Scout Camp | Sequoia Council at Camp Chawanakee
Lincoln Heritage Council | Black Swamp Area Council
Tranquility Camp | Laurel Highlands | Camp Nooteeming

Photos from Camp Chawanakee Project



“It was magical watching the youth roll up their sleeves and own the project. What these cabins do is allow more and different groups to use the facility and see what a jewel it is.”
-Scout Leader

The Most Complete LOG CABIN Package inthe Industry

- Floor System:**

 - 4” x 6” Pressure Treated Skids
 - Metal Floor Trim
 - Fasteners
 - 2” x 6” Tongue & Groove Flooring

Log Walls:

 - Laminated Everlast™ Kiln-Dried Log Wall System
 - Gable End Logs
 - Caulking
 - Emseal Gasket Material
 - 80d/40d Nails

Windows:

 - Double Hung Low-E/Argon Vinyl Windows
 - Window Bucks
 - Interior & Exterior Window Trim
 - Fasteners

Doors:

 - Insulated Steel 9-lite 2 Panel Exterior
 - Pre-Hung 6 Panel Wood Interior Doors
 - Door Bucks
 - All Door Hardware
 - Interior & Exterior Door Trim Fasteners

Loft Floor System:

 - Laminated Floor Joists
 - Joist Hangers
 - 2” x 6” Tongue & Groove #1 Yellow Pine Loft Floor Boards
- Pre-manufactured Staircase & Railings or Loft Ladder (cabin size specific)

 - Loft Railings, Posts & Pickets
 - Fasteners

Roof System:

 - Laminated Ridge Beam
 - Laminated Mid-Roof Beams
 - 15 lb. Felt Paper
 - Gable End Trim
 - 45 yr. Metal Roof
 - 2” x 6” Tongue & Groove Yellow Pine V-Groove Roof Boards

Interior Finish Materials:

 - 2”x 4” Interior Partition Walls
 - 2”x 6” Interior Partition Walls (Plumbing Walls)
 - 1”x 6” Shiplap Interior Wall Boards
 - Interior Baseboard Trim
 - Interior Door Trim
 - Pre-Hung Interior Wood Doors
 - Passage Door Hardware
 - Private Door Hardware
 - Fasteners

Porch Materials:

 - Pressure Treated Floor Joists
 - Joist Hangers
 - 2” x 6” Pressure Treated Decking
 - Porch Posts, Railings & Pickets
 - Porch Roof Beams
- All Roofing Materials & Trims
 - 4” x 6” Pressure Treated Skids
 - Gable End Webbing

Electrical:

 - Electrical Wiring & Grommets
 - Boxes, Switches, Outlets & Covers
 - Interior Light Fixtures & Bulbs
 - Smoke Detectors
 - Exterior Lights & Bulbs

Pre-Cut Materials:

 - Pre-cut/Pre-drilled Logs
 - Pre-cut Floor Boards
 - Pre-cut Roof Beams & Peak Logs
 - Pre-cut Interior & Exterior Window/Door Trims

Options:

 - Decks
 - Porch Extensions & Side Porches
 - Custom Doors & Windows
 - Log Wall Insulation Packages
 - Floor & Ceiling Insulation
 - Interior Polyurethane
 - Exterior Stain
 - Pier Kit
 - Conventional First Floor System
 - Supplemental Heating & Cooling Unit
 - Kitchenette
 - Screen Door Kit

Heavy Roof and Floor Loading, High Altitude, Seismic, Hurricane, Nordic, Tropical and Other Extreme Weather Building Specifications Are Available as an Upgrade.

Assembly

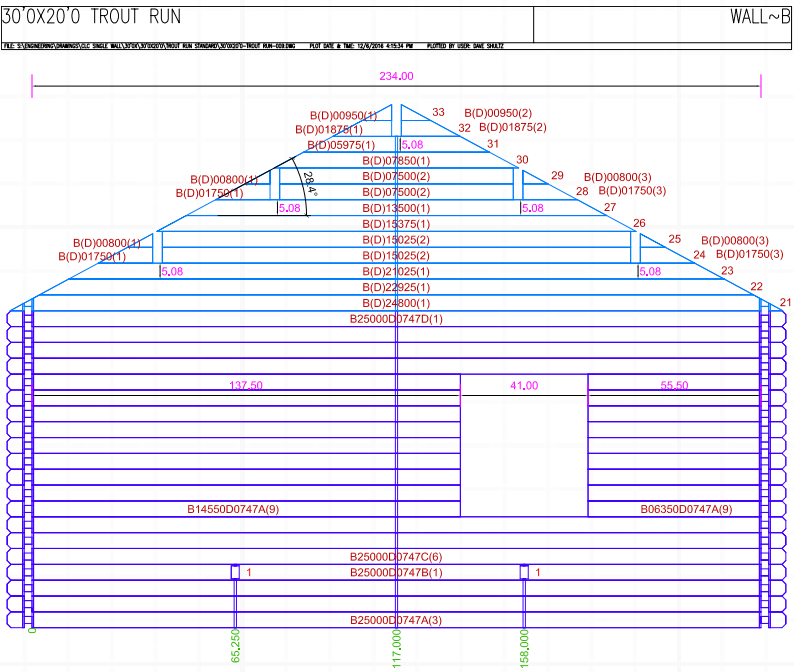
We make it easy for non-builders and builders without log cabin construction experience to build our log cabins. Every log has a label attached with a unique number that corresponds to plan drawings. This unique number enables you to know the exact location of every log during the construction process.

The numbering system not only ensures organization and easy identification, but facilitates technical support if needed. If a question arises during construction our technical support team is available to provide assistance. By providing the log number our technicians will know exactly what you’re working on and how to better assist you.

In addition to our user friendly log numbering system, detailed assembly instructions, plans and diagrams accompany every Conestoga log home kit. Telephone technical support is included with every purchase. We also offer an extensive library of assembly videos. In addition, an assembly crew can be made available to travel worldwide.

Need help with your log cabin assembly kit?

In case a question arises, Conestoga’s knowledgeable staff is available for assistance. Conestoga is committed to providing customers with quality support, materials and supplies.

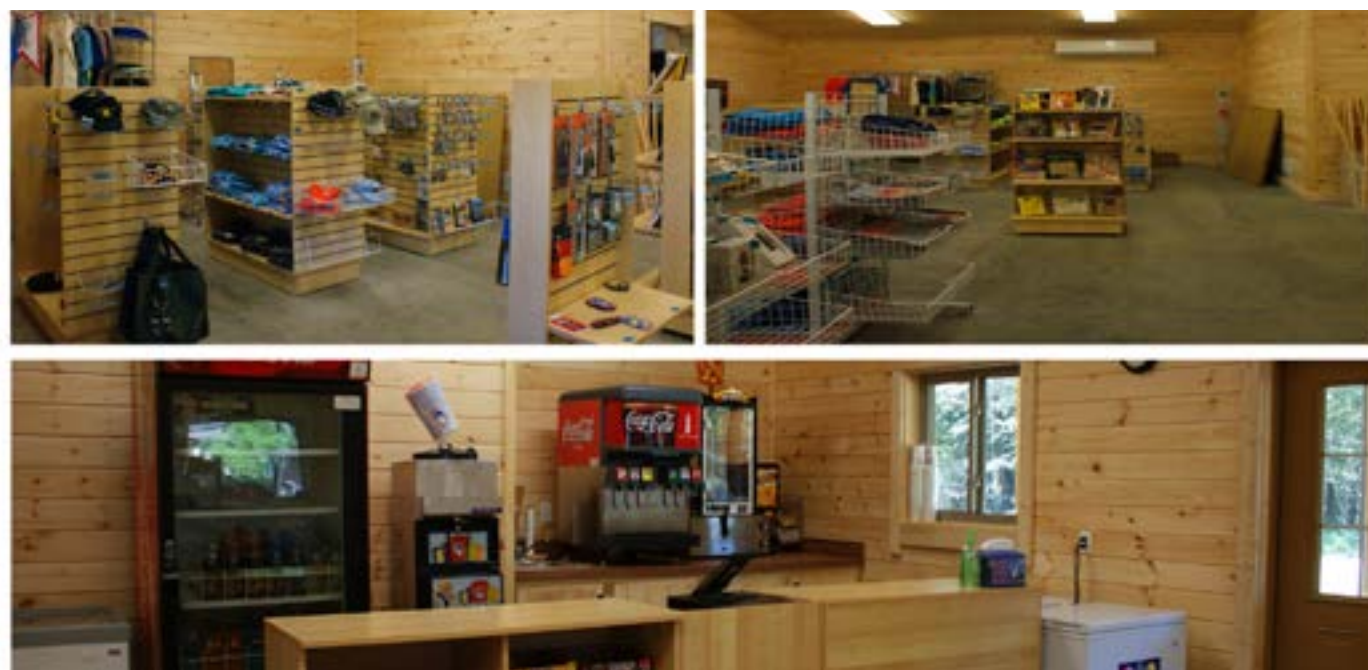


Option A: Lincoln Heritage



Specifications

- 1700 SQF
- 34' x 50'
- 2 Restrooms
- Separate Staff Quarters
- Sales Area
- Supply Closet
- Concessions Area



Photos from Lincoln Heritage Council

Kit Overview

The main room of the Lincoln is the trading post. Just off the trading post, you'll find an oversized supply closet and the mechanical room. Two ADA compliant restrooms with outside private entrances are located at the front of the building. In addition, there are two staff bedrooms also with private outside entrances.

***BSA National can assist with planning of larger buildings. Visit www.Scouting.org.

Option B: Huron

Photo from Ten Mile River Scout Camp



Specifications

- 3000 SQF
- 75' x 40'
- Covered Porches
- Trading Post
- Kitchen
- Commissary
- Private Restrooms

Option A: Boulder Lodge



Specifications

- 292 SQF
- 14'7" x 20'
- 1 Bathroom
- Great Room
- Kitchen
- Covered Porch



Kit Overview

This log cabin features 1 bedroom, living space with a comfortable great room, open kitchen area, and a large 6' x 20' covered porch.

BSA Fun Fact -

The Boy Scouts of America program was first established February 8th, 1910.

Option B: Trout Run



Specifications

- 600 SQF
- 30' x 20'
- 2 Bedrooms
- 1 Bathroom
- Kitchen Area
- 6' x 30' Porch

Option A: Pioneer



- Specifications**
- 169 SQF
 - 13' X 13'
 - Bunkroom
 - ADA Option
 - 10' x 13' Covered Porch



Kit Overview

The Pioneer is a one room cabin that offers sleeping accommodations for up to four people.

BSA Fun Fact -
More than 2 million boys in the United States have earned the rank of Eagle Scout.

Option B: Conestoga Cabin

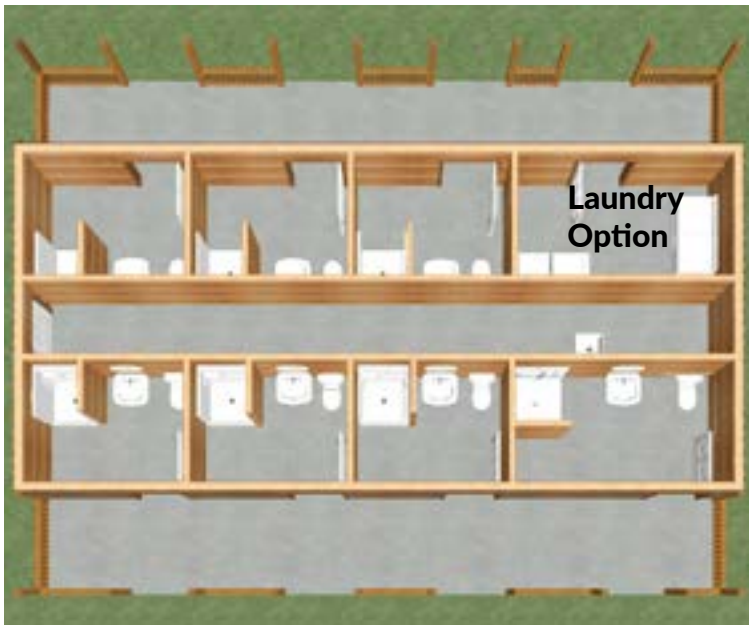


- Specifications**
- 143 SQF
 - 13' X 11'
 - 1 Bunkroom
 - 10' x 13' Porch

Option A: BSA



- Specifications**
- 840 SQF
 - 38'10" X 20'
 - 8 Private Bathrooms
 - Laundry Area Optional
 - ADA Bath/Shower
 - All Fixtures Included



May be Expanded

Kit Overview

This attractive log cabin kit bathhouse features eight separate rooms. Six private bathrooms are spacious and identical with a shower stall, toilet, and sink. One ADA bath with separate laundry or 2 ADA baths.

Option B: BSA Restroom



- Specifications**
- 624 SQF
 - 20'8" X 30'
 - 1 ADA Rrestroom
 - Sorage Area

Option A: Elk Lodge Bunkhouse



Specifications

- 393 SQF
- 14' 7" X 27'
- Sleeps 16
- 1 Private Bedroom
- ADA Option



Option: Sycamore Pavilion



Specifications

- 480 SQF
- Can be customized to any size

NOTE:

Multiple Layouts Available

- Open
- Wind-break
- Storage Room
- ADA Restroom

Photos from Hudson Valley Council



Kit Overview

Sleep 16 in bunkbeds or 15 in bunks with one private room for a staff member. Covered porch with an entrance on either end of the building.

BSA Fun Fact -

150 members of the 115th Congress have participated in Scouting, 33 of them being Eagle Scouts.

Option B: Explorer Lodge



Specifications

- 980 SQF
- 20' X 49'
- Open Sleeping Area
- Capacity to sleep 26
- Half Bathroom
- ADA

BSA Fun Fact -

Five U.S. Presidents were Boy Scouts :

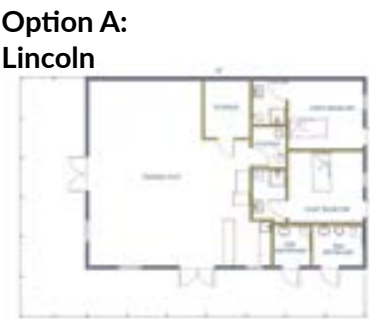
- John F. Kennedy
- Gerald Ford
- William Clinton
- George W. Bush
- Barack Obama

BSA Fun Fact -

John Lennon and Paul McCartney went to Cubs together.

Scout Leaders contribute the equivalent of 37 million hours of voluntary work every year.

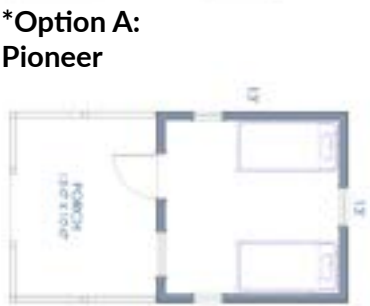
P. 4.



P. 5.



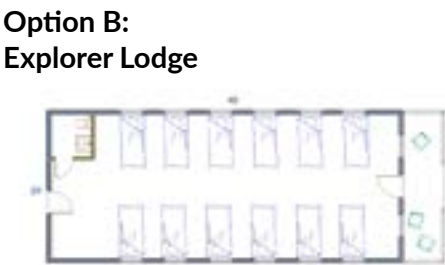
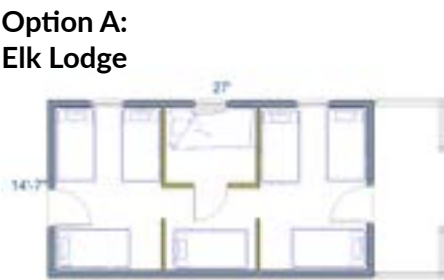
P. 6.



P. 7.



P. 8.



P. 9.

Pavilion Options

*Option A:
Pavilion with Windbreak



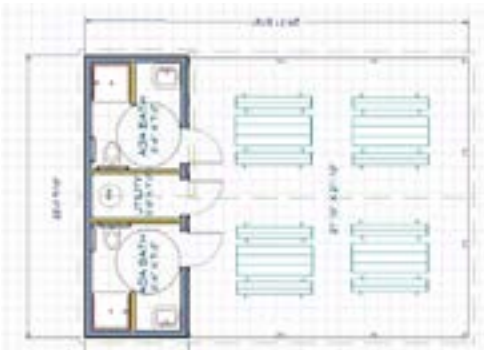
*Option A:
Open Pavilion



*Option A:
Double Pavilion with Storage



*Option A:
Pavilion with ADA Bath



BSA Fun Fact -
The only men to walk on
the moon were Boy Scouts.

*BSA Layouts That Are BSA National Architect & Engineer Approved




Conestoga
LOG CABINS & HOMES

BSA.ConestogaLogCabins.com

